



78 Beverley Road

, Bristol, BS7 0JN

£2,300 Per month

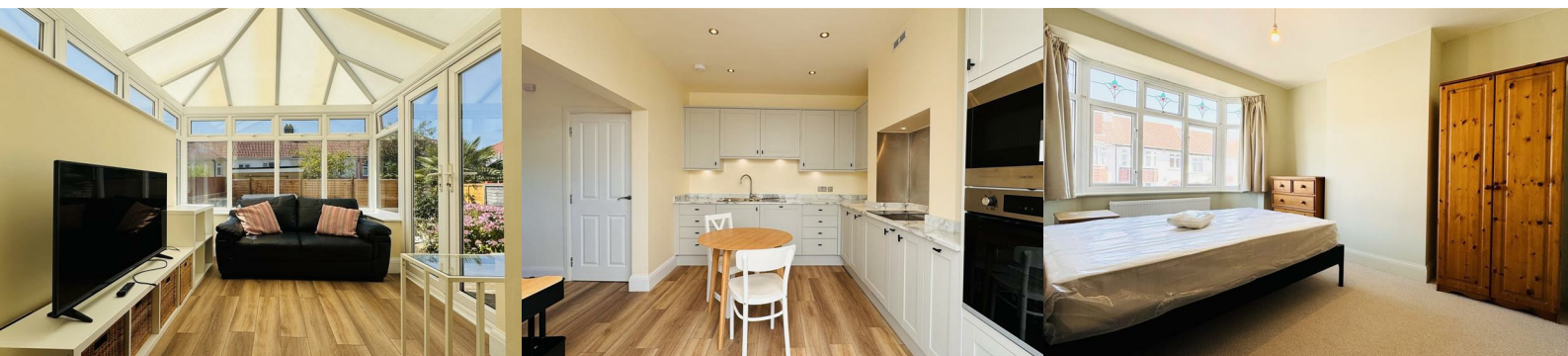


* Available Mid July 2026 *

Airsat Real Estate are proud to present this 3 bedroom fully furnished newly refurbished end of terrace house, situated in the popular area of Horfield close to amenities and shops, with excellent transport links.

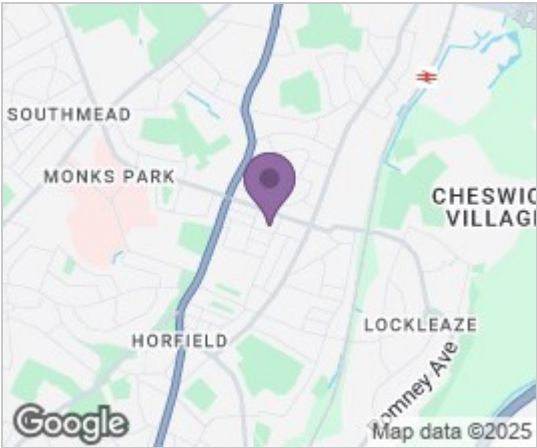
The property is ideally located in close proximity to Southmead Hospital, UWE, Airbus, Rolls Royce and MOD as well as the Horfield Leisure Centre which is just a 10 minutes walk from the property.

The ground floor consists of a modern fully fitted kitchen, separate lounge/sitting room leading to a private garden, an excellent size double bedroom and a cloakroom.

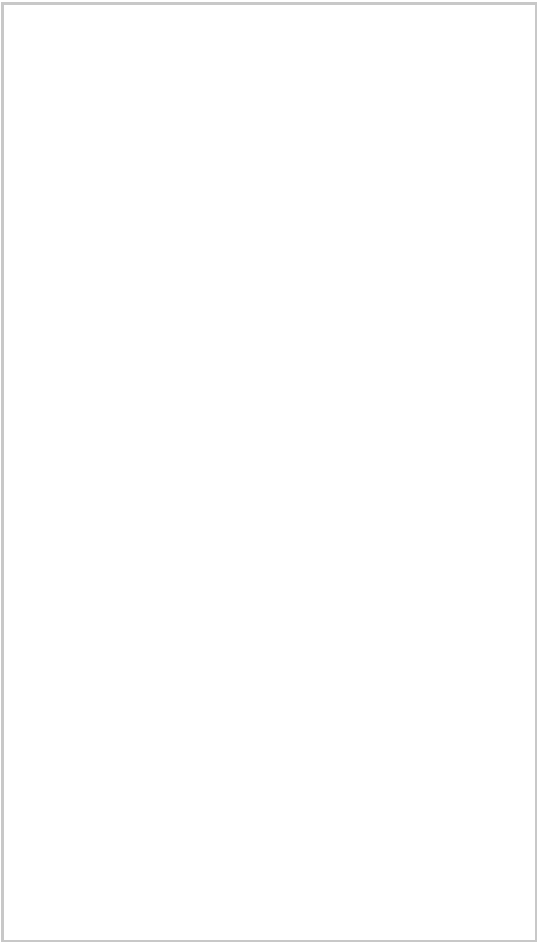


- Kitchen
- Lounge
- Cloak Room
- Bedroom 3
- Bedroom 1
- Bedroom 2
- Study Room
- Bath Room

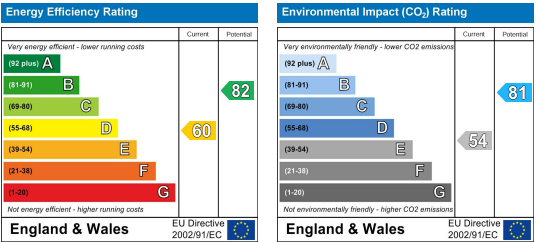
Area Map



Floor Plans



Energy Efficiency Graph



These particulars, whilst believed to be accurate are set out as a general outline only for guidance and do not constitute any part of an offer or contract. Intending purchasers should not rely on them as statements of representation of fact, but must satisfy themselves by inspection or otherwise as to their accuracy. No person in this firms employment has the authority to make or give any representation or warranty in respect of the property.

